

Leading Hospital Chain Leverages **Cloud Managed Services and Cloud Optimization Services** to Improve its IT Landscape on MS Azure



ABOUT US :

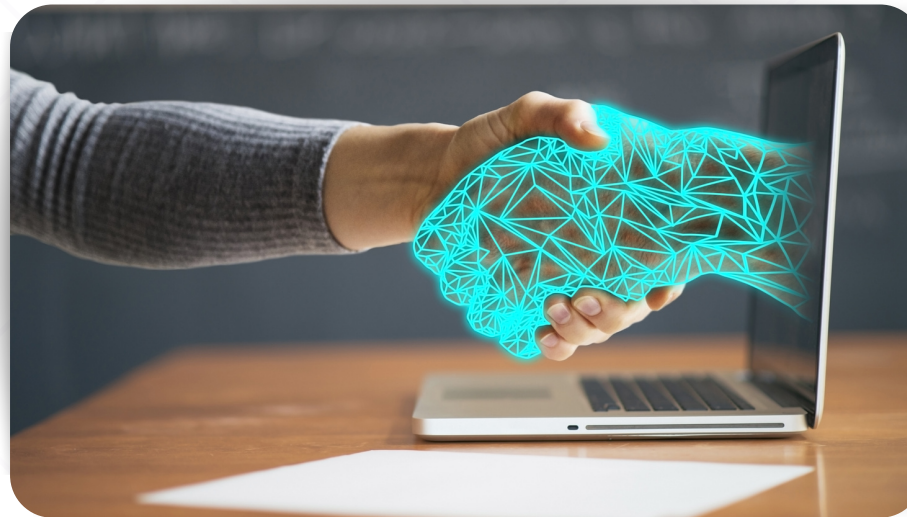
ThoughtSol is India's one of the leading IT solutions and service providers that empowers businesses to undergo digital transformation in this digitally driven era. With our considerable expertise in providing **Cloud Services, Cybersecurity solutions, Digital Solutions, Data Centre Solutions, Hybrid IT, and NextGen Services**, we have made determined attempts to advance, create, and innovate while increasing our client base and modernizing businesses.

NUMBER OF YEARS IN BUSINESS **9+**

100+ CERTIFIED RESOURCES

NUMBER OF CLIENTS **402+**

HAPPY EMPLOYEES = HAPPY CUSTOMERS



We are certified with Excellence in **Quality Management, Service Management, Information Service Management, Environmental Management and Business Continuity Management**.



Microsoft
Solutions Partner



INDUSTRY:
Healthcare



OFFERINGS:
MS Azure Services
Landscape of IaaS & PaaS

www.thoughtsol.in

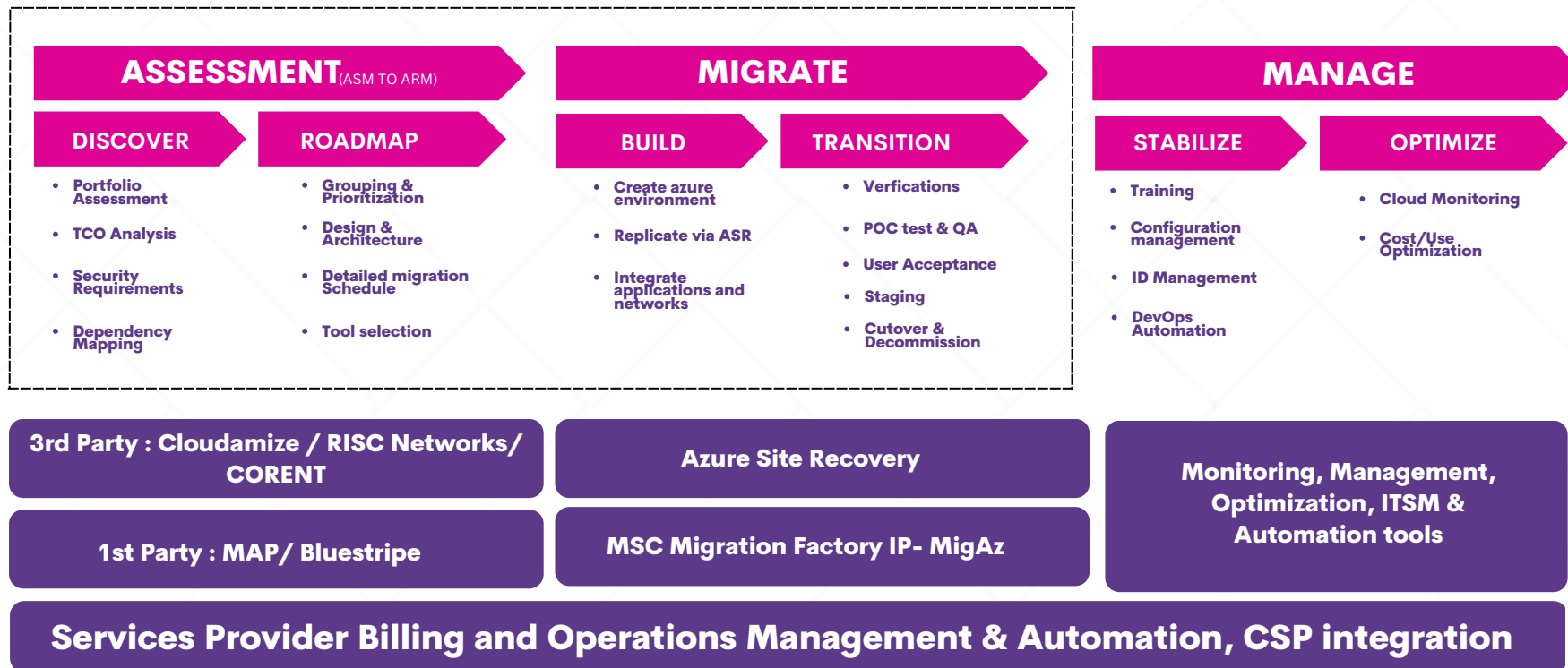
THOUGHT-SOL
— Exceeding Expectations —

ABOUT THE CLIENT :

Our client is a distinguished supplier of comprehensive healthcare delivery services in India. Their healthcare divisions largely include hospitals, diagnostic services, and daycare specialty services. Presently, their healthcare delivery services are functional in India, Dubai, Mauritius, and Sri Lanka, with 54 healthcare facilities (including ongoing projects), approximately 10,000 potential beds, and 314 diagnostic centers.



AZURE MIGRATION FRAMEWORK:



The Azure Migration framework helps in identifying the best migration strategy to plan, assess, and migrate the existing workloads to Microsoft Azure. It also provides guidance on how to adopt, configure, and operate Azure services to optimize the customer's cloud environment.

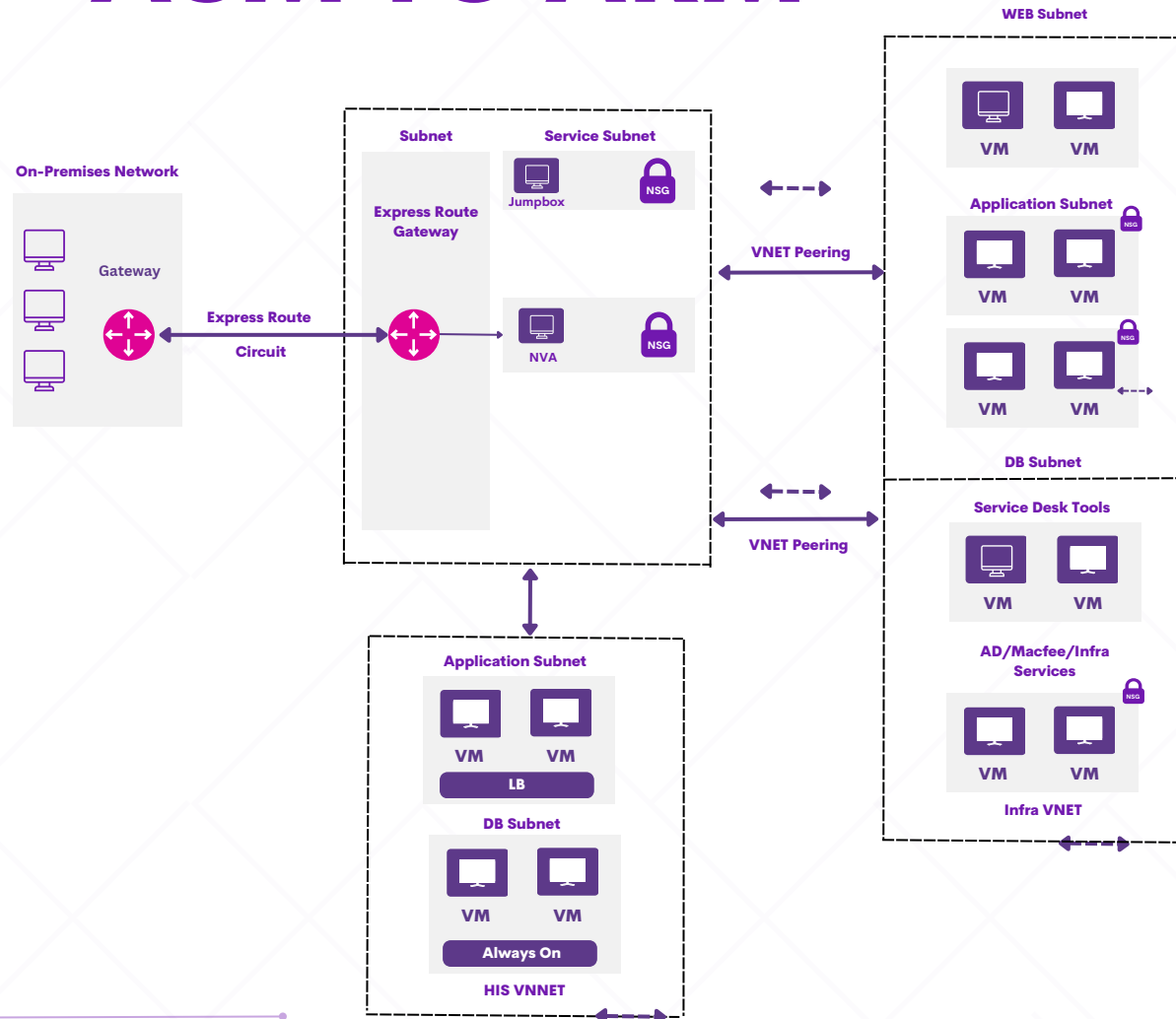


WHAT THOUGHTSOL DID?

We administered the cloud platform and assisted them in exploiting the extensibility and agility of the cloud with its enterprise-grade networking possibilities that enabled the hospital to effectuate low-latency connections between different programs and readily scale their tasks. The key areas we focused on were:

- 24*7*365 Azure monitoring & Management.
- Provided managed services for 100+ cloud servers hosted on Azure & AWS.
- Cloud Networking support for IPsec Tunnel, express route configuration, etc.
- Provided PaaS DB support.
- Provided managed service for Windows Active Directory for 30 locations.
- Office 365 email management for 7000 active users.
- Cost management and Optimization of cloud resources.
- Architecting and planning resources according to application requirements.

REHOST - ASM TO ARM



Rehost - asm to arm helps cloud-managed services and optimization by providing a **cost-effective** and **reliable solution** for migrating existing x86 assembly language applications to the ARM architecture. It also helps to **optimize cloud-managed services** for **better performance, scalability, and security**.

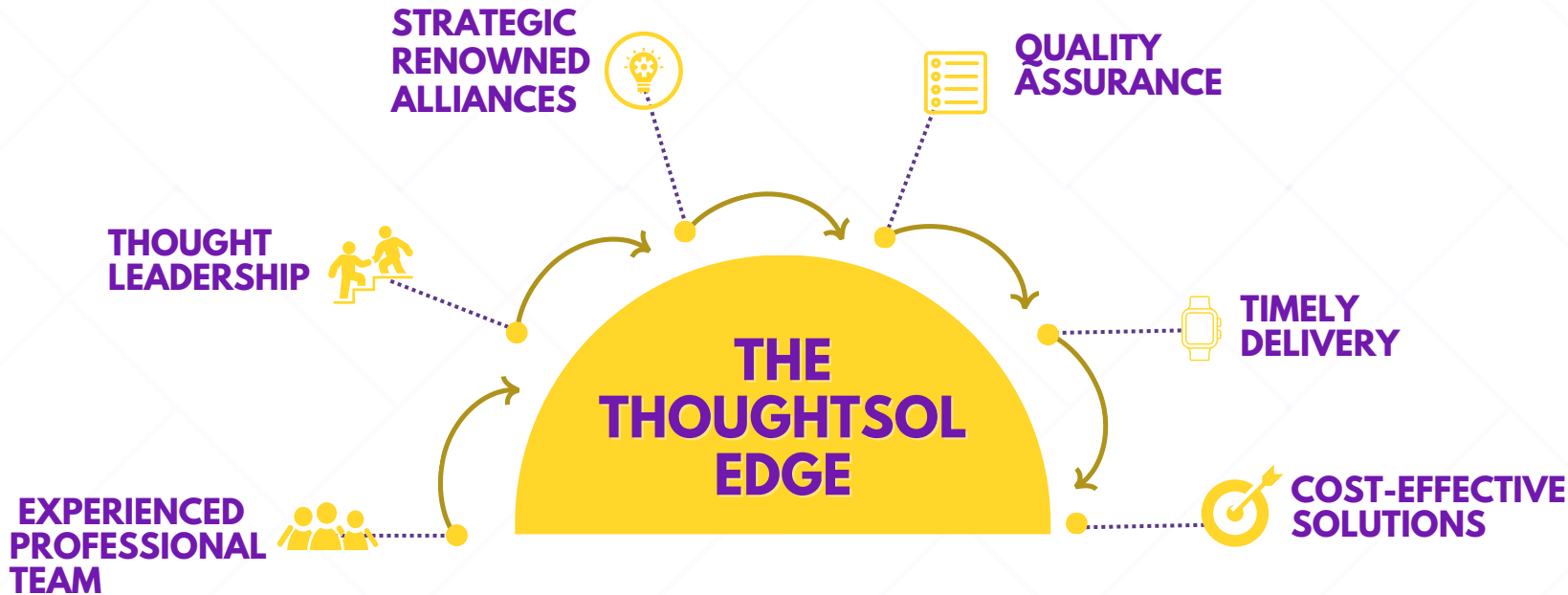
HOW IT HELPED THE CLIENT?

The key differentiating factors that ThoughtSol brought to the client were the following :

- **More Flexibility:** Aided them in building applications on their exclusive virtual environment in the India data center on the cloud and established the applications as if they were on their on-premises LAN environment. This enabled them to fulfill the objective of creating Disaster recovery sites for business-critical applications like ERP, HIS, etc.
- **Centralized Help Desk and NOC Monitoring:** ThoughtSol supplied its client with centralized help desk and NOC monitoring 24*7 fulfilling of the client's requests.
- **Reduced Cost:** A dramatic cost reduction in the testing environment was achieved as users only had to pay for the time they switched on the servers, providing unlimited scalability and agility for any Windows or Linux-based applications.



THE THOUGHTSOL EDGE:



CONNECT WITH OUR EXPERTS



: www.thoughtsol.in



: Solutions@thoughtsol.in



: 9810624885

We believe in the happiness of all our stakeholders and keep our **customers at the centre of everything** we do.

#HealthCareCaseStudy